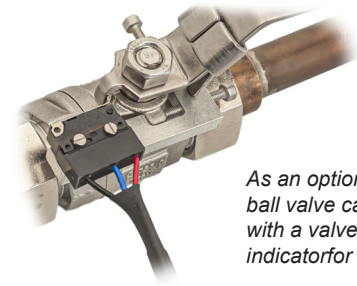
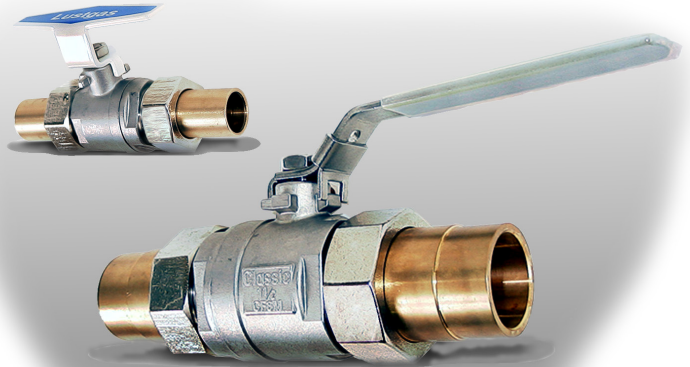


# Ball valve Classic

Ball valve classic is the best medicine valve on the market, specially designed for medical gases. The valve can be used anywhere in the gas pipeline system where a manual shut-off is needed. The valve is delivered degreased according to national norm SIS HB 370, and the current standard EN ISO 7396-1.

The valve is made of stainless steel, with the full flow of the connection pipe. Connection is performed by brazing the bronze fittings without the use of flux and with shield gas inside of pipe during brazing. Surface finish better than Ra <0.8. The ball valve classic is replaceable in that the bronze fittings are of face seal type with O-ring to the valve body. The valve is delivered as standard with a lockable handle but can optionally be delivered with non-lockable handles in the dimensions Ø10, 12, 15, 22 and 28 mm. The valve is CE marked. As an option, Classic ball valve can be equipped with valve position indicator (microswitch) for all valve sizes. Also available with stainless steel orbital welding ends.



*As an option, the Classic ball valve can be equipped with a valve position indicator for all valve sizes.*

220112\_010905:20 ENG

## Program text

QMT 7611XX0 Stainless steel medical ball valve Classic. The valve is degreased according to EN ISO 7396-1 and SIS HB 370, has full flow, surface finish better than Ra <0.8. It is equipped with bronze fittings for flux-free brazing and a lockable handle. The valve stem has three sealings. Pressure class PN 64.

## Construction

The ball valve Classic is a ball valve where the valve body, stem and ball are made of stainless steel equal to AISI 316. The stem seal consists of, in order from the media, a PTFE washer, a O-ring and a PTFE gland packing.

The interior of the valve has a surface finish better than Ra <0.8. Valve ends are provided with O-rings, which provides a face seal to the bronze fittings so that the valve can be replaced or removed. The other seals of the valve are made of Teflon. Chrome plated flare nuts for brons fittings. Ball valve Classic has a full inside diameter similar to the pipe dimension, completely without pressure drop.

Qmt's Ball Valve Classic has sufficient conductivity and does not need a equipotential cable over the valve coupling.

Qmt-tech's valve position indikator is used when you want to get an indication in the alarm and operating system if a Qmt-tech ball valve Classic is operated from normal mode. The switch can be mounted to indicate either fully open or fully closed valve. The valve position indikator has a breaking function.

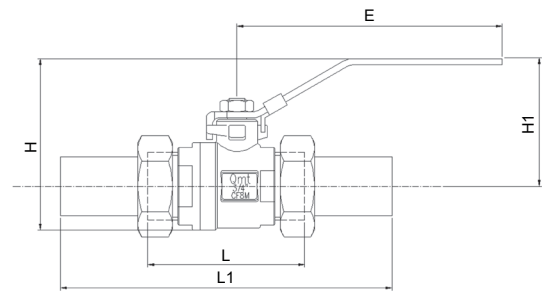
**Installation instructions**

Classic valve connections (material bronze equivalent to CC491K/CC493K) shall be shield gas brazed by a qualified brazzer using silver phosphorous copper solder with a minimum of 5% silver. **During the brazing operation, the valve body must be replaced by the brazing dummy (art. No. QMT 7600XX)** so as not to be damaged (see warning text) and to obtain a correct shielding gas flow. If the brazing dummy is not used, there is a risk that the soldering end will not become parallel to the valve's o-ring groove with leakage as a result.

Sealing plugs, packaging or protective packaging must not be removed until the time of installation, as there may be a risk of damaging or contaminating the product. The valve is delivered with five labels for marking the medium that passes through the valve. The selected label is placed under the transparent handle.

To prevent the valve from being operated by unauthorized persons, the valve is equipped as standard with a lockable handle (Please note that a locked valve can only be operated by personnel with a key and that this may pose a safety risk).

After installation, safety tests must be carried out before commissioning in accordance with the hospital's instructions or current standards. During installation and safety testing, the labelling is checked so that it corresponds with the gas that is to be used by the valve.

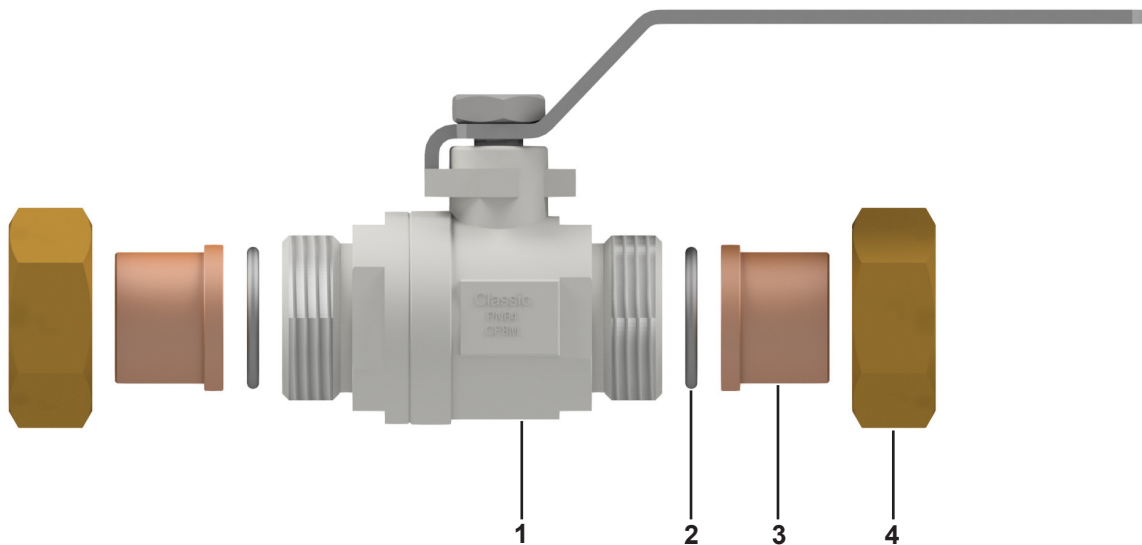


Art nr	Connection-dimension	PN (bar)	Measure [mm]					Weight [kg]	
			L	L1	H	H1	E		
QMT 7611100	10	64	62,3	122,3	83,9	50,5	101	0,5	} These two are valve dimension 15 with reducing bronze fittings
QMT 7611120	12	64	62,3	122,3	83,9	50,5	101	0,5	
QMT 7611150	15	64	62,3	137,3	83,9	50,5	101	0,5	
QMT 7611220	22	64	76,5	151,5	107,3	64	131,5	0,9	
QMT 7611280	28	64	85,5	165,5	124,5	69,5	166,5	1,5	
QMT 7611350	35	64	105,9	185,9	138	75	166,5	2,1	
QMT 7611420	42	64	119	219	155,5	82	191,5	3,7	
QMT 7611540	54	64	132,3	252,3	180,3	90	191,5	5,1	

### Spare parts

Pos	Name	Art nr <sup>1)</sup>
1	Valve body	
2	O-ring	QMT 7614XX0
3	Brons fitting	QMT 7616XX0
4	Flare nut	QMT 7615XX0
5	Orbital welding end	QMT 7616XX0RF

1) Replace XX with the desired connection dimension. 10/12/15/22/28/35/42/54



### Operation & maintenance instructions

- During installation and then annually, the ball valve Classic must be exercised (valve handle turned 90 degrees and then back to original position) and tested for safety. If leakage is detected, o-rings are replaced at the connections. Then the safety test is performed again. If no leakage or abnormal inertia is detected, the valve is approved for another year.
- Before commissioning, the system must be safety inspected in accordance with current standards.
- Consumed product is returned to returned to an authorized recycling company.

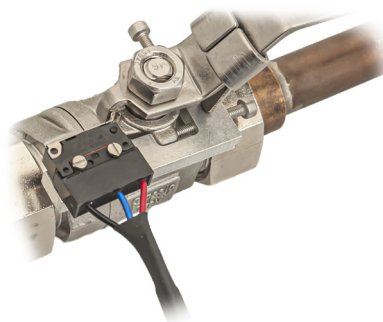
### Warning

The use of shielding gas in medical gas systems must be carefully planned and separated from the rest of the system. After brazing and testing is completed, the system is purged with the medical gas (= pharmaceutical) to be contained in the system, to prevent personal injury. See hospital instructions. The valve must not be exposed to temperatures exceeding 100 ° C, either during installation or operation. Should this happen or suspect that this has happened, the valve must be replaced and the system decontaminated. In the event of a fire, the system must be decontaminated in the affected parts. To prevent unintentional shut-off of terminal units downstreams of the valve, make sure that all terminal units downstreams of the valve are not in use and safe for shut-off or are supplied by gas from another direction.

### Ordering

Ball valve classic	Art nr	Connection-dimension	Also available for orbital welding add RF after the article number
	QMT 7611100	(RF) 10	
	QMT 7611120	(RF) 12	
	QMT 7611150	(RF) 15	
	QMT 7611220	(RF) 22	
	QMT 7611280	(RF) 28	
	QMT 7611350	(RF) 35	
	QMT 7611420	(RF) 42	
	QMT 7611540	(RF) 54	

Accessories	Art nr	Dimension
Valve position indicator	QMT 7251347	15
	QMT 7251348	22
	QMT 7251349	28-35
	QMT 7251350	42-54



Spare parts	Art nr
O-ring	QMT 7614XX0
Flare nut	QMT 7615XX0
Brass fitting	QMT 7616XX0
Orbital weld end	QMT 7616XX0 RF

Replace XX with the desired connection dimension. 10/12/15/22/28/35/42/54  
Welding end (orbital) add RF after the article number